



PRODUCT CATALOGUE

▶ WATERPROOFING
▶ FLOORING



www.anchorallied.com



About us

Anchor Allied Factory L.L.C., established in 1995 in Sharjah, U.A.E., Anchor Allied Factory L.L.C. has evolved from a small manufacturing unit into a leading name in the Middle East's industrial and construction chemical sector.

Our extensive product portfolio includes Silicone Sealants, PU Sealants, PU Foam, Spray Paints, Aerosol Products, and Adhesive Tapes, as well as Two-part Spray-Applied PU Foam for insulation, Waterproof Coatings, Epoxy resin-based products, Repair Mortars, Floor coatings, Self-levelling. Epoxy Flooring, Epoxy Screeds, and a wide range of Allied industrial solutions.

Driven by innovation and supported by a dedicated in-house R&D team, Anchor Allied integrates advanced global technologies to ensure top-tier product quality. Its state-of-the-art manufacturing facility complies with international standards, making its products benchmarks in global markets.

With exports to over 84 countries and a strong presence across the Middle East, Africa, Asia, CIS, Europe, South America and USA, the company also operates regional offices in Saudi Arabia, Egypt, Ukraine, Latin America, India, and the USA, ensuring efficient service and dedicated local support for its global customer base.

Index

WATERPROOFING

ACRYLIC WATERPROOFING COATING

- ASMACOAT WP 600

WET AREA WATER PROOFING

- ASMACOAT WP 900
- ASMACOAT WP 810
- ASMACOT WP 905

POLYURETHANE WATERPROOFING COATING

- ASMACO PU 850
- ASMACOAT 5900 PUD
- ASMACOAT WP 936

HYBRID WATERPROOFING COATING

- ASMACOAT AMP

WATER REPELLANT

- ASMACO AQUA SHIELD
- ASMACO AQUA STOP

BITUMEN WATERPROOFING EMULSION

- ASMACO RBE 10

ASMACO WARM ROOF ASSEMBLY

ASMACO COMBO ROOF WATERPROOFING SYSTEM

- ASMACO PUF 40 (Thermal Insulation Two Part Spray Foam)
- ASMACO PUF 4550 (Thermal Insulation Two Part Spray Foam)

UV PROTECTIVE COATING

- ASMACO RBE 10
- ASMACOAT WP 810
- ASMACO AMP
- ASMACOAT WP 600

SEPARATION LAYER

- ASMACO GEOTEC 120 gsm (Separation Layer)

RIDGES

- ASMACO JFB, (Joint Filler board for RIDGES)

SCREED

- CONCRETE SCREED

CONSTRUCTION JOINT

- ASMACO FLEX SEAL BACKER ROD (Polyethylene backer rod)
- ANCHORSEAL 963 PG & GG (Joint Sealant)
- ASMACO PU 90 (Joint Sealant)
- ANCHOR PRIME P1 (Primer for polysulfide sealant)

TOPCOAT

- ASMACO WP 600 (Topcoat Acrylic Coating)





FLOORINGS

EPOXY BASED CONCRETE REPAIR MORTAR

- ASMACO POXY 90 FC
- ASMACO POXY 95
- ASMACO POXY 95 CW

EPOXY BASED FLOOR PRIMER

- ASMACO FLOOR PRIME P2 (SOLVENT BASED)
- ASMACO FLOOR PRIME P-2 SF (SOLVENT FREE)

EPOXY RESIN BASED FLOOR COATING

- ASMACO FLOOR FC 150
- ASMACO FLOOR FC 160 CP

EPOXY RESIN BASED FLOOR SCREED

- ASMACO FLOOR 6 ES

EPOXY RESIN BASED SELF-LEVELLING FLOOR

- ASMACO FLOOR 4000 SL

COLOR PASTE

- ASMACO FLOOR COLOR PASTE

FILLER & ANTISLIP GRAIN

- ASMACO FLOOR ANTISLIP GRAIN
- ASMACO FLOOR 4000 SL FILLER
- ASMACO FLOOR 6 ES FILLER

POLYURETHANE BASED FLOOR COATING

- ASMACO FLOOR UV2 (Clear & RAL Coloured) REFER TDS

CLEANER

- ANCHOR CLEANER 1

EPOXY BASED TILE ADHESIVE

- ASMACO POXY TA



Waterproofing

ASMACOAT WP 600



Acrylic Liquid Applied Waterproofing Membrane

ASMACOAT WP 600 is a one component acrylic liquid applied waterproofing and protective coating for concrete and recommended substrate structures. A water based acrylic liquid applied membrane. It is easily applicable on horizontal and vertical surfaces. Once cured it forms a continuous waterproofing membrane resistant against the thermal changes and the ultraviolet rays. Suitable for use in hot and tropical climate conditions.

AREAS OF APPLICATION

ASMACOAT WP 600 is easy to apply, cost effective and particularly used in:

- Concrete roofs, metal profile roofs, asbestos roofs, domes.
- Protective coating for Polyurethane sprayed foam against UV effect.
- Protective coatings on underpasses & concrete bridge decks.
- For reflective coating to enhance energy efficiency by reducing cooling costs.
- Protective and decorative coating on exposed concrete surfaces both for vertical and horizontal applications.

PACKAGING	ASMACOAT WP 600 is available in 25 kg Pail
COVERAGE RATE	1st Coat 0.7 Kg / m ² , 2nd Coat 0.6 Kg / m ² 1.3 kg/m ² /1mm thickness
COLOUR	OFF WHITE, GREY & CUSTOMIZED ON REQUEST
Elongation	>200%
SRI (SOLAR REFLECTION INDEX)	> 90 ASTM - C 1549



ASMACOAT WP 900



Pitch Modified Polyurethane Liquid Applied Waterproofing Membrane

ASMACOAT WP 900 is a single component pitch modified liquid polyurethane. It cures by reaction with atmospheric moisture to form a tough elastomeric waterproof membrane. ASMACOAT WP 900 is designed for use on horizontal and vertical surfaces.

AREAS OF APPLICATION

ASMACOAT WP 900 is easy to apply, cost effective and particularly used in:

- Balconies, terraces.
- Baths (showers), kitchens and difficult access spots.
- Retaining Walls.
- Stairs, stadiums, tribunes.
- Water channels and reservoirs.
- Foundation and Below Grade Structures.
- Concrete Roofs, Asbestos Roofs, Domes.

PACKAGING	ASMACOAT WP 900 is available in 20 Liter Pail (27 kg Pail)
COVERAGE RATE	1 Liter or 1.35 kg / m ² for thickness of 1.0 mm
COLOUR	Dark Brown / Black
Elongation	>800%



ASMACOAT WP 810



Liquid Applied Polyurethane Waterproofing Membrane

ASMACOAT WP 810 is a single component liquid applied membrane, it cures by reaction with atmospheric moisture to form a tough elastomeric waterproof membrane. ASMACOAT WP 810 is designed for use on horizontal and vertical surfaces.

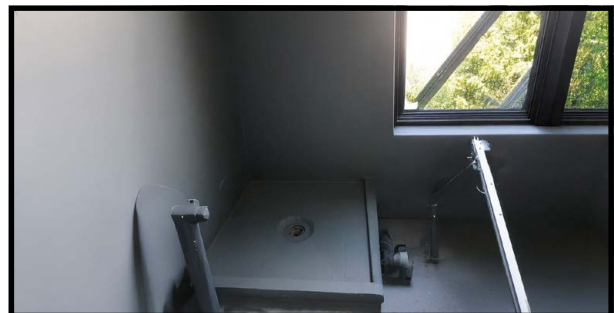
AREAS OF APPLICATION

ASMACOAT WP 810 is easy to apply, cost effective and particularly used in:

- Balconies, terraces, Kitchen, Bathrooms
- Baths (showers), kitchens and difficult access spots.
- Flooring with pedestrian traffic.
- Stairs, stadiums, tribunes, Planter Box,
- Water channels and reservoirs.
- Foundation and Below Grade Structures, Retaining walls,
- Concrete Slab, metal profile roofs, asbestos roofs, domes.

STANDARD COMPLIANCE : ASTM C 836

PACKAGING	ASMACOAT WP 810 is available in 25 kg Pail
COVERAGE RATE	1.30 Kg / m ² / coat, Thickness of 1.0 mm
COLOUR	Black / White / Grey
Elongation	≥ 800% - 1000%



ASMACOAT WP 905



Two Component Polyurethane Liquid Applied Waterproofing Membrane

ASMACOAT WP 905 is a two-component polyurethane coating, designed to form a seamless, elastomeric waterproofing membrane. When fully cured forms a permanently flexible waterproof lining to most building surfaces including reinforced concrete, block works, brick works, cement render, plaster board and fibre-reinforced cement. It cures by reaction to form a tough elastomeric waterproof membrane.

AREAS OF APPLICATION

ASMACOAT WP 905 is easy to apply, cost effective and particularly used in:

- Roofs Basements and foundations.
- Tunnels and bridges.
- Terraces and balconies.
- Car decks.
- Planter boxes Retaining walls.

PACKAGING	ASMACOAT WP 905 is available in 28 kg set, Part A 20 kg, Part B 8 Kg Pail
COVERAGE RATE	1.51 Kg / m ² for Thickness of 1.0 mm
COLOUR	Black / White / Grey
Elongation	700% - 800%



ASMACOAT WP 936



One-Component, Aliphatic, Elastic Polyurethane Liquid Applied Waterproofing Membrane

ASMACOAT WP 936 is a top-tier protective coating formulated with Aliphatic Polyurethane Resins. Its one component design allows application on diverse surfaces, including steel, concrete, and cured epoxies or Polyurethanes. Applying two coats with a wet film thickness of 250-300 microns per coat results in a final dry film thickness of 150-180 microns. This coating excels in extreme exposure conditions, and additional coats may be applied for enhanced protection.

AREAS OF APPLICATION

ASMACOAT WP 936 can be successfully applied on tiles, oncrete, cement roof tiles, wood and galvanized steel. The seamless membrane can be used as an impervious waterproof coating on the following:

- Roofs & Profile Sheets.
- Sunken Slabs & Concrete Domes.
- Kitchen and Bathrooms.
- Balconies and Patios.
- Basements Swimming Pools and other Water Retaining.
- Structures, Bridges and Tunnels, etc.

PACKAGING	ASMACOAT WP 936 is available in 28 kg Pail
COVERAGE RATE	1.4 Kg / m ² for Thickness of 1.0 mm
COLOUR	White & Customized on request
Elongation	>500%



ASMACOAT WP 5900 PUD



Modified Polyurethane Liquid Applied Waterproofing Membrane

ASMACOAT WP 5900 PUD is a single-component waterborne polyurethane dispersion based on PUD Technology. It features low VOC content, providing environmental benefits. The is designed for exterior applications, offering durability, color and gloss retention, and chemical resistance. The incorporation of long-chain polyurethane macromolecules in a water medium through PUD Technology is highlighted as an innovative approach, contributing to a “Green Revolution” in polyurethane-based products.

AREAS OF APPLICATION

ASMACOAT WP 5900 PUD is easy to apply, cost effective and particularly used in:

- Waterproofing of Balconies / Terrace.
- Waterproofing of pedestrian areas (Decks).
- Protection of Polyurethane Foam Insulation.
- Waterproofing of most surfaces Concrete, Precast Concrete, Boundary Walls foundations (buried structure).

PACKAGING	ASMACOAT WP5900 PUD is available in 25 kg Pail
COVERAGE RATE	1st Coat 0.7 Kg / m ² , 2nd Coat 0.6 Kg / m ² = 1.3 kg / m ² / 1 mm thickness
COLOUR	White, Grey & Customized on request
Elongation	>250%



ASMACO PU 850 PRIMER



1 K Polyurethane Primer

ASMACO PU 850 Primer is a high-performance, moisture-curing polyurethane solvent-based primer engineered for robust adhesion and anchoring on concrete, metal, and cementitious screed surfaces. This versatile primer is specifically formulated to enhance the bonding and durability of ASMACO's polyurethane waterproofing coatings, including ASMACO WP 810, ASMACO WP 900, and ASMACO WP 936. Ideal for both indoor and outdoor applications, ASMACO PU 850 Primer ensures maximum waterproofing effectiveness and surface compatibility, creating a strong, lasting bond that resists moisture infiltration and environmental stress.

AREAS OF APPLICATION

Stir before use with Clean and dry rod to get uniform solution. Simple and easy to apply by roller, brush, and airless spray. Fill all cracks, deep holes, and joints with putty before application. Based on requirement 1-2 coats could be applied to 40 – 80 microns. Once the pail opens it must be applied completely.

PACKAGING	ASMACO PU 850 Primer is available in 25 kg Pail
COVERAGE RATE	6 m ² / coat. May 2nd coat required to achieve the result
COLOUR	Off White



ASMACO AMP



Hybrid Liquid Applied Waterproofing Solution

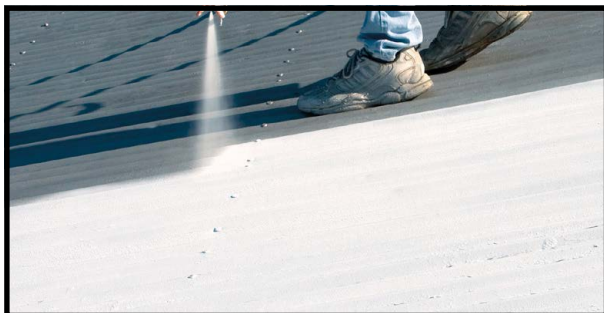
ASMACO AMP is a one component liquid applied waterproofing and protective coating for concrete structures based on a hybrid polyurethane modified with specially selected polymers to form a tough, flexible, and durable coating. it is completely free from coal tar and other hazardous ingredients.

AREAS OF APPLICATION

ASMACO AMP is easy to apply, cost effective and particularly used in:

- Wet areas kitchens, Bathrooms
- Roofs, terraces & balconies.
- Protective and decorative coating on exposed concrete surfaces for vertical and horizontal applications.
- Waterproofing of flashing, roof edgings, walls (either concrete, cement mortar, wood, and metal)
- Waterproofing of gardens, swimming pools, basement, and sandwich application.
- Protective coating on polyurethane foam insulation.

PACKAGING	ASMACO AMP is available in 20 kg
COVERAGE RATE	1.25 Kg / m ² for thickness of 1.0 mm
COLOUR	Off White / Grey / Black
Elongation	>500%



ASMACO AQUASHIELD



Colour - Less Silane Siloxane - Based Water Repellent

ASMACO AQUASHIELD is a silane siloxane-based polymer dispersed in high boiling solvents and treatment which penetrates into porous substrates and then reacts with moisture or pore water from the substrate to form a hydrophobic lining to the capillaries without clogging the pores or capillaries vertical walls & other masonry substrates. It maintains the appearance of substrates and provides better UV resistance. STANDARDS : ASMACO AQUASHIELD complies with BS 6477-92 Class A and Class B as silicone - based water repellent.

AREAS OF APPLICATION

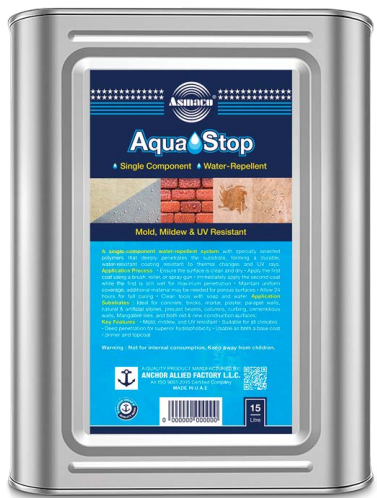
ASMACO AQUASHIELD is strongly recommended for

- Clay brick surfaces.
- Concrete, mortar & parapet walls.
- Mangalore tiles.
- Natural and artificial stones.
- precast, beams, columns, curbing & retaining walls.
- Treat both new and existing structures.
- Porous architectural curtain wall panels.

PACKAGING	ASMACO AQUA SHIELD is available in 5 Litre & 20 Litre Plastic Pail
COVERAGE RATE	1-4 m ² on masonry surface/3-5 m ² concrete/stones non porous surface
COLOUR	Milky White



ASMACO AQUASTOP



Silicone-infused water- repellent hydrophobic coating.

ASMACO AQUA STOP is a single-component, silicone-infused, water-repellent hydrophobic coating composed of siloxane and silane polymers dispersed in specially selected solvents. It is designed to protect concrete, bricks, and cementitious vertical walls by deeply penetrating the substrate, forming an effective and long-lasting water-repellent barrier.

AREAS OF APPLICATION

Suitable for all water-penetrable building materials including:

- Concrete.
- Cement mortar.
- Plaster.
- Bricks.
- Roof tiles.
- Clay brick surfaces.
- Mangalore tiles.
- Natural and artificial stones.

PACKAGING	ASMACO AQUASTOP is available in 15 Liter Pail
COVERAGE RATE	Porous surface 4 - 6 m ² / Dense surface 6 - 8 m ²
COLOUR	Clear



ASMACO PUF 40



Pre-blended Spray Polyol.

ASMACO PUF 40 is a pre-blended rigid polyurethane spray polyol designed for the insulation of roof, wall and floor. When reacted with ASMACO MDI under the recommended reaction conditions, the foam has a good surface finish with excellent cell structure and good adhesion to various substrates. The blowing agent exhibits zero ODP and < 5 gwp.

AREAS OF APPLICATION

- Combo roof system.
- Metal roof insulation.
- Horizontal & vertical application.
- Interior & Exterior application.

COMPONENT DATA: ASMACO PUF 40 (POLYOL) & ASMACO PUF (MDI)

Packaging	Polyol 220 Kg (Part A - Blue), MDI 250 Kg (Part B - Red)
Type	Spray applied PU foam
Mix ratio	1 : 1 Liter
Applied Density	40-45 kg/m ³



ASMACO PUF 4550



Pre-blended Spray Polyol.

ASMACO PUF 4550 is a pre-mixed rigid polyurethane spray polyol specially formulated for insulating roofs, walls, and floors. When combined with ASMACO PUF MDI under optimal reaction conditions, it produces foam with a smooth surface finish, superior cell structure, and strong adhesion to various substrates. The blowing agent used has zero ozone depletion potential (ODP) and a global warming potential (GWP) of less than 5.

AREAS OF APPLICATION

- Combo roof system.
- Metal roof insulation.
- Horizontal & vertical application.
- Interior & Exterior application.

COMPONENT DATA: ASMACO PUF 4550 (POLYOL) & ASMACO PUF (MDI)

Packaging	Polyol 220 Kg (Part A - Blue), MDI 250 Kg (Part B - Red)
Type	Spray applied PU foam
Mix ratio	1 : 1 Liter
Applied Density	45-50 kg/m ³



ASMACO RBE 10



Tough and flexible vapor proof protective coating

ASMACO RBE 10 is a high-performance, rubber-modified bitumen coating designed to deliver durable, seamless, and flexible protection. Upon drying, it forms a robust layer that acts as a vapor-proof barrier while maintaining exceptional flexibility. This emulsion is particularly valued for its seamless application, which eliminates weak points and ensures comprehensive coverage for the underlying surface.

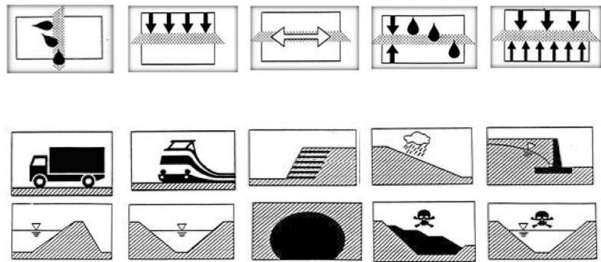
AREAS OF APPLICATION

- Roof Waterproofing.
- Polyurethane Spray Foam Protective Coating.
- Basements and Foundations.
- Concrete and Masonry Surfaces.
- Retaining Walls.
- Bridges and Culverts.
- Tanks and Pipelines.

PACKAGING	ASMACOAT RB10 is available in 200 Liter & 20 Liter Pail
COVERAGE RATE	1- 4 m ² / Litre / Coat.
COLOUR	Black



ASMACO GEOTEC 120 GSM



100% Polypropylene Nonwoven Geotextile, Needle-Punched and Non-Thermally Bonded

ASMACO GEOTEC 120 GSM is a nonwoven geotextile made from 100% virgin polypropylene staple fibers. These fibers are needle-punched and non-thermally bonded, creating a stable network that maintains fiber positioning. The material meets the following average values when tested according to the standards listed below. ASMACO GEOTEC 120 GSM is resistant to biological degradation and withstands common chemicals, alkalis, and acids found in natural environments.

AREAS OF APPLICATION

- Railways & Roads.
- Foundations & Retaining Walls.
- Drainage Systems.
- Erosion Control Systems.
- Reservoirs & Dams.
- Canals, Tunnels & Underground Structures.
- Solid Waste Containment & Liquid Waste Management.
- Combo Roof Waterproofing System, Separation Layer.

PACKAGING	Roll Dimensions (W) 3 Mtr, Roll Dimensions (L)100 Mtr
COVERAGE RATE	3 m ² / Running meter
COLOUR	White



ASMACO JFB



An ideal base material for expansion joint fillers

ASMACO JFB Expansion Joint Filler Board are high-performance materials designed for a wide range of concrete applications. These strips ensure durability and structural integrity by accommodating thermal movements and protecting against stress or environmental impacts. Suitable for various surfaces, they meet modern construction standards and are ideal for use in highways, runways, pavements, industrial floors, and more. ASMACO JFB is manufactured from cane fiber, a raw material renowned for its exceptional resilience. Impregnated with bitumen in varying percentages, it serves as an ideal base material for expansion joint fillers. STANDARDS: • ASTM D 1751 • BS 6093 • EN 13969.

AREAS OF APPLICATION

- Concrete Screed Panels.
- Traffic Surfaces.
- Concrete Paving.
- Structural Elements.
- Waterproofing Protection Boards.

SHEET	Standard sheet sizes: • 7.3' x 4' ft • 2200 mm X 1220 mm = 2.64 m ²
STANDARD SHEET THICKNESSES	10.1 mm, 12.1 mm, 18.1 mm, 19.1 mm
COLOUR	Brown



ASMACO FLEXSEAL BACKER ROD



Closed-cell Polyethylene Foam Backer Rod

ASMACO FLEX SEAL BACKER ROD is a closed-cell, non-absorbent, and chemically inert polyethylene foam rod. Its flexible design makes it an ideal compressible joint backing material for elastomeric and a wide range of cold-applied joint sealants.

AREAS OF APPLICATION

Expansion Joints • Acts as a compressible backing for sealants in structural movement joints. • Used in concrete, masonry, and other expansion systems. Pavement Joints • Provides support for sealants in concrete pavements, sidewalks, and roadways. • Enhances durability and accommodates thermal movement in outdoor surfaces. • Precast Units and Copings • Ideal for joints in precast concrete elements and coping systems, ensuring uniform sealing. Curtain Wall Joints • Used in exterior wall systems to support sealants in building envelopes. • Prevents air and water leakage while allowing structural flexibility. Windows and Doors • Fills gaps and serves as a backing material for sealants in window and door frames. • Provides thermal insulation and prevents air infiltration. • These applications demonstrate the product's adaptability in sealing and insulating joints, ensuring long-term performance and structural integrity.

PACKAGING	BACKER ROD are available in roll (Refer TDS)
SIZE'S	6 mm, 10 mm, 15 mm, 20 mm, 25 mm, 30mm, 45mm and 50mm
COLOUR	White



ASMACO PU 90



Single Component Polyurethane Sealant

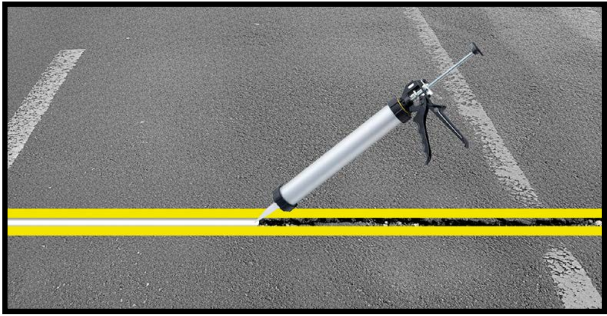
ASMACO PU 90 is a high-performance, single-component polyurethane sealant that cures upon exposure to atmospheric humidity. Engineered for flexible and durable sealing, it is suitable for both indoor and outdoor applications, providing dependable joint sealing and weatherproofing against harsh environmental factors.

AREAS OF APPLICATION

- Construction Joints.
- Facade Sealin.
- Roofing Applications.
- Sanitary Sealing.
- Industrial and Commercial Applications.
- Acoustic Sealing.
- Carpentry and Metalwork.

Joint Size in mm	Liters/meter Run	600 ml/ sausage meter Run
4 x 4	0.016	37.5
6 x 6	0.036	16.60
12 X 10	0.120	5.00
20 x 10	0.200	3.00
25 x 12	0.300	2.00
30 x 15	0.450	1.33
35 x 15	0.525	1.14

PACKAGING	ASMACO PU 90 is available in 600 ml Sausage
COLOUR	Beige / Grey / Black / White / Cream
Elongation	> 200%



ASMACO PU 90 SP



Single Component Polyurethane Sealant

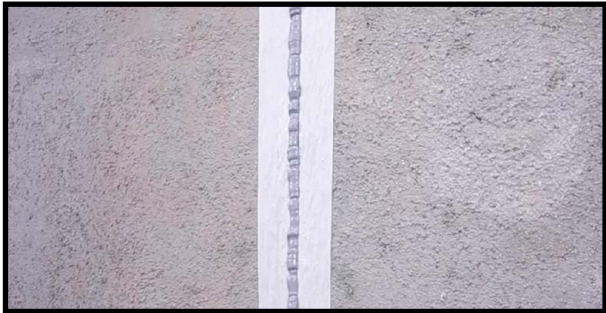
ASMACO PU 90 SP stands as a top-tier, high-performance sealant, boasting advanced polyurethane technology. This premium-grade, moisture-cured, 1-component formulation is characterized by exceptional elasticity and durability. With its non-sag property, it allows easy application on vertical surfaces while maintaining robust sealing capabilities. Versatile across a range of applications, this elastomeric sealant sets a superior standard for reliable and enduring sealing solutions.

AREAS OF APPLICATION

- Construction Joints.
- Facade Sealin.
- Roofing Applications.
- Sanitary Sealing.
- Industrial and Commercial Applications.
- Acoustic Sealing.
- Carpentry and Metalwork.

Joint Size in mm	Liters/meter Run	600 ml/ sausage meter Run
4 x 4	0.016	37.5
6 x 6	0.036	16.60
12 X 10	0.120	5.00
20 x 10	0.200	3.00
25 x 12	0.300	2.00
30 x 15	0.450	1.33
35 x 15	0.525	1.14

PACKAGING	ASMACO PU 90 SP is available in 600 ml Sausage
COLOUR	Beige / Grey / Black / White / Cream
Elongation	800%



ANCHOR PRIME P1



ANCHOR PRIME P1 for surface sealing and increase the adhesion with ANCHORSEAL 963, PG/GG

ANCHOR PRIME P1 is a low viscosity one component solvent based priming system for concrete joints prior to the application of ANCHORSEAL 963, PG / GG joint sealants.

AREAS OF APPLICATION

The ambient and substrate temperature needs to be above 5°C before and after the application of the primer. Agitate the primer contents thoroughly by shaking the cane for 30 seconds. Apply an even coat of primer by brush onto the bonding faces of the concrete, the base of the joint should have no primer residue present after the primer has been applied, then allow the primer to become touch dry before applying any sealant (typically 20 minutes at 25°C). Don't apply sealant to wet / tacky primer. The sealant must be applied within 8 hours at normal temperatures.

Joint Size in mm	Liters/meter Run
5 x 5	500
10 x 10	250
15 X 15	175
20 x 20	130
25 x 25	100
30 x 30	80
40 x 40	40
50 x 50	30

PACKAGING	ANCHOR PRIME P1 is available in 500 ml Tin
COLOUR	Clear



ANCHORSEAL 963 PG



Two part pouring grade polysulphide joint sealant

ANCHORSEAL 963 PG is a two-part Polysulphide Sealant which cures once the two components are mixed to give a flexible rubber seal. It has good adhesion to concrete and many other common building substrates.

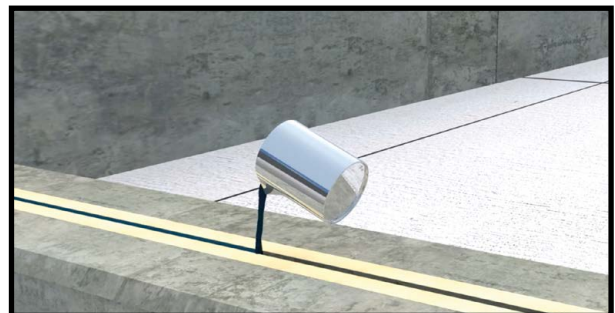
AREAS OF APPLICATION

ANCHORSEAL 963 PG Sealing of movement and control joints in:-

- structural floor joints.
- Airport runways and apron pavements.
- Industrial warehouses.
- Garages & workshops.
- Swimming pool walkway floors Joints.

Joint Size in mm	Liters/meter Run	4 Liter /Pack meter run
5 x 5	0.025	160.00
5 x 10	0.050	80.00
10 x 10	0.100	40.00
15 x 10	0.150	26.67
20 x 10	0.200	20.00
20 x 15	0.300	13.33
20 x 20	0.400	10.00
30 x 20	0.600	6.67
40 x 20	0.800	5.00
40 x 25	1.000	4.00
40 x 30	1.200	3.33
40 x 40	1.600	2.50
50 x 25	1.250	3.20
50 x 30	1.500	2.66
50 x 40	2.000	2.00
50 x 50	2.500	1.60

PACKAGING	4 Litres set x 4 pcs box
COLOUR	Black
Elongation	>700%



ANCHORSEAL 963 GG



Multicomponent Gun Grade Polysulphide Sealant

ANCHORSEAL 963 GG is a two-part Polysulphide Sealant which cures once the two components are mixed to give a flexible rubber seal. It has good adhesion to concrete and many other common building substrates.

AREAS OF APPLICATION

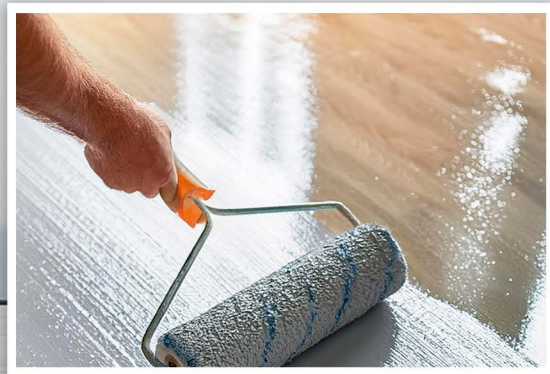
- Sewage works and effluent treatment plant.
- Chemical processing areas.
- Concrete floors in factory warehouses.
- Bridge and culvert decks.
- Swimming pool decks.
- Jetties and harbor.
- Stadiums, balconies and plant rooms.
- Factory warehouses.
- Waterproofing and protection

Joint Size in mm	Liters/meter Run	2.5 Liter /Pack meter run
5 x 5	0.025	100.00
5 x 10	0.050	50.00
10 x 10	0.100	25.00
15 x 10	0.150	12.50
20 x 10	0.200	8.33
20 x 15	0.300	6.25
20 x 20	0.400	3.12
30 x 20	0.600	2.50
40 x 20	0.800	2.00
40 x 25	1.000	1.56
40 x 30	1.200	2.00
40 x 40	1.600	1.67
50 x 25	1.250	1.25
50 x 30	1.500	1.00
50 x 40	2.000	2.00
50 x 50	2.500	1.60

PACKAGING	2.5 litres set X 6 pcs / box
COLOUR	Black
Elongation	>680%



Flooring



Epoxy Based Concrete Repair Mortar



ASMACO POXY 90 FC



High strength trowel grade, epoxy resin fairing coat, repair mortar, bedding and adhesive
ASMACO POXY 90 FC is a specialized two-component epoxy compound designed for repairing concrete surfaces. It is particularly well-suited for filling pinholes and addressing surface irregularities in concrete before applying additional coatings. With the ability to be applied from a feather-edge up to 3 mm thickness, it offers versatility in addressing various levels of surface imperfections. The thixotropic formulation, devoid of solvents, allows for easy application on vertical or overhead surfaces without the need for a primer.

- AREAS OF APPLICATION**
- Filling pinholes prior to overcoating with ASMACO FLOORING products.
 - General reprofiling over large areas, up to 3 mm depth.
 - Sealing of surface cracks in preparation for crack injection.
 - General purpose bedding mortar and adhesive.

PACKAGING	6 kg kit (Component A 4.5 Kg, Component B 1.5 Kg)
COVERAGE RATE	200 microns WFT coverage is approximately 5 m² / Kg @ 200µ wft
COLOUR	Grey
TYPE	Two Component



ASMACO POXY 95



Two component 100% solids solvent free, High strength, abrasion-resistant epoxy reinstatement mortar

ASMACO POXY 95 is a two-component, 100% solids epoxy deep crack filler designed for shallow repairs on both vertical and horizontal surfaces. This product is easy to mix and use, featuring a non-critical mix ratio. Furthermore, due to its 100% solids formulation, the product can be applied more generously on horizontal surfaces when necessary.

AREAS OF APPLICATION

- Designed for a wide range of floors with various levels of mechanical and chemical exposure.
- Concrete repair.
 - Skim coat/filler.
 - Jointing compound.
 - Bedding material.
 - Excellent for anchoring bolts or replacement rebar and filling bolt pockets.
 - Adhesive for bonding structural reinforcement, particularly in structural strengthening works. Especially for the following uses: Carbon Fiber Plates to concrete, brickwork, timber and steel.

PACKAGING	6 kg kit (Component A 4.5 Kg, Component B 1.5 Kg)
COVERAGE RATE	1.60 – 1.65 kg/m² per mm of thickness
COLOUR	Grey
TYPE	Two Component



ASMACO POXY 95 CW



Two component 100% solids solvent free, Advanced cold weather epoxy adhesive, high strength, moistureolerant

ASMACO POXY 95 CW is a specialized epoxy resin-based structural adhesive designed for use in cold conditions. It consists of two components and exhibits moisture tolerance during application and curing.

AREAS OF APPLICATION

- Structural bonding for precast and post-tensioned concrete bridge segments.
- Sealing joints between concrete sections in segment-by-segment erection processes.
- Ideal for segmental bridge construction in cold weather temperatures ranging from -6°C to 7°C (20°F to 45°F).

PACKAGING	6 kg kit (Component A 4.5 Kg, Component B 1.5 Kg)
COVERAGE RATE	1.60 — 1.65 kg/m ² per mm of thickness
COLOUR	Concrete Grey
TYPE	Multi Component





Epoxy Based Floor Primer

ASMACO FLOOR PRIME P2



Epoxy based, penetrating, stabilizing primer for range of ANCHOR ALLIED epoxy coatings

ASMACO FLOOR PRIME P2 is a two-component, solvent-based epoxy primer, used on cementitious and concrete substrates where epoxy resin coatings and floorings are applied.

AREAS OF APPLICATION

- Penetrates deeply into the concrete, clogging the pores, thus preventing water from entering the concrete/ masonry by capillary action.
- Long open time.
- To harden and stabilize concrete surfaces.
- Reduces the potential of substrate contamination from blowing sand or other deleterious material.

PACKAGING	ASMACO FLOOR PRIME P 2: (A+B) 4 Litre Se, Part A: 2 Liter + Part B: 2Liter
COVERAGE RATE	ASMACO FLOOR PRIME P2: 8.00 m ² /litre
COLOUR	Amber
TYPE	Two Component



ASMACO FLOOR PRIME P2-SF



Two Component Solvent Free High-Performance Primer for Epoxy Flooring System

ASMACO FLOOR PRIME P2-SF is a two-component, A high-performance, solvent-free epoxy primer designed for concrete. It is formulated to deliver rapid curing in thin films, with no amine blush, even in low temperatures and high humidity conditions.

AREAS OF APPLICATION

- Penetrates deeply into the concrete, clogging the pores, thus preventing water from entering the concrete/ masonry by capillary action.
- Long open time
- To harden and stabilize concrete surfaces.
- Reduces the potential of substrate contamination from blowing sand or other deleterious material.

PACKAGING	ASMACO FLOOR PRIME P 2-SF: (A+B) 4 Liter Set, Part A: 2 Liter + Part B: 2 Liter
COVERAGE RATE	ASMACO FLOOR PRIME P2-SF: 4 - 6 m ² /liter
COLOUR	Clear
TYPE	Two Component



ASMACO FLOOR FC 150



Multi Component High-build Solvent Free Epoxy Floor Coating

ASMACO FLOOR FC 150 is a multi component, solvent free, heavy duty epoxy floor coating. It is a self-smoothing, easy to apply product, leaving a seamless & and final finish is smooth glossy surface. It has excellent chemical, abrasion and impact resistance designed as part of a thin film coating system.

AREAS OF APPLICATION

ASMACO FLOOR FC 150 is easy to apply, cost effective and particularly, Designed for a wide range of floors with various levels of mechanical and chemical exposure.

- Warehouses, Food, Beverage, Plant Rooms, Dairies, Factories, Laboratories.

PACKAGING	21.80 kg (Part A), 3.90 kg (Part B), Colour Paste : 2.30 kg
COVERAGE RATE	ASMACO FLOOR PRIME P2: 8 m ² / Kg ASMACO FLOOR FC150 (base coat): 3 m ² / Kg @ 250μ wft ASMACO FLOOR FC 150 (topcoat): 3 m ² / Kg @ 250μ wft EPOXY REPAIR PUTTY: ASMACO POXY 90 FC: 1.65 Kg / m ² / 1mm thickness.
COLOUR	RAL Colour Available in 12 Shades (Refer TDS)
TYPE	Multi Component



ASMACO FLOOR FC 160 CP



High-build solvent free epoxy coating for anti-slip traffic & parking deck protection

ASMACO FLOOR FC 160 CP is a solvent-free epoxy coating multi component system designed for specific applications where durability and safety are paramount. Its range of thickness, solvent-free nature, and ability to create a profiled finish make it a suitable choice for basement, ground floor, podium car parks and intermediate traffic decks with low structural movement.

AREAS OF APPLICATION

ASMACO FLOOR FC 160 CP is easy to apply, cost effective and particularly, Designed for a wide range of floors with various levels of mechanical and chemical exposure.

- Car Parking & Garages.
- Aircraft hangars and maintenance areas.
- Car workshops • Traffic decking Pedestrian walkways.

PACKAGING	21.80 kg (Part A), 3.40 kg (Part B), Colour Paste : 2.30 kg
COVERAGE RATE	ASMACO FLOOR PRIME P2: 8 m ² / Kg ASMACO FLOOR FC160 CP (base coat): 3 m ² / Kg @ 250μ wft ASMACO FLOOR FC 160 CP (topcoat): 3 m ² / Kg @ 250μ wft EPOXY REPAIR PUTTY: ASMACO POXY 90 FC: 1.65 Kg / m ² / 1mm thickness
COLOUR	RAL Colour Available in 12 Shades (Refer TDS)
TYPE	Multi Component



ASMACO FLOOR 6 ES



Multicomponent Epoxy Screed and Repair Mortar.

ASMACO FLOOR 6 ES system is a multicomponent epoxy screed designed to provide durable and abrasion-resistant protection for concrete floors. It is applied with a trowel at a thickness of 5 mm & 6 mm is suitable for use in hot and tropical climates. In addition to flooring, it can be used for coving or as a repair medium for damaged areas. Ideal for industrial and high-traffic environments, it offers long-lasting protection against wear and mechanical stresses.

AREAS OF APPLICATION

- Loading bays & Workshops.
- Distribution centers & Laydown areas.
- Production halls & Power installations.
- Metal processing and engineering.
- Food processing industries.
- Car workshops.
- Traffic decking Pedestrian walkways.

ASMACO FLOOR PRIME P2 - SF:	4 – 6 m ² / Kg
ASMACO FLOOR 6 ES:	~2.15 Kg / m ² / 1.0 mm Thickness
EPOXY REPAIR PUTTY:	
ASMACO POXY 90 FC:	~1.65 Kg / m ² / 1mm thic kness

PACKAGING	Set 28 kg kit (Part A 2 kg, Part B 0.9 kg), Color paste 0.4 kg, filler 24.7 kg
COLOUR	RAL Colour Available in 12 Shades (Refer TDS)
TYPE	Multi Component



ASMACO FLOOR 4000 SL



Multicomponent Epoxy Screed and Repair Mortar.

ASMACO FLOOR 4000 SL is a multi-component, self-smoothing epoxy overlay system designed to protect concrete floors with a durable, glossy, and colorful finish. Applied in thicknesses of 1.5 to 4.0 mm, it creates a dense, high-strength surface once cured. The system is formulated for use in hot and tropical climates, offering long-lasting protection without the need for solvents or excessive manual smoothing.

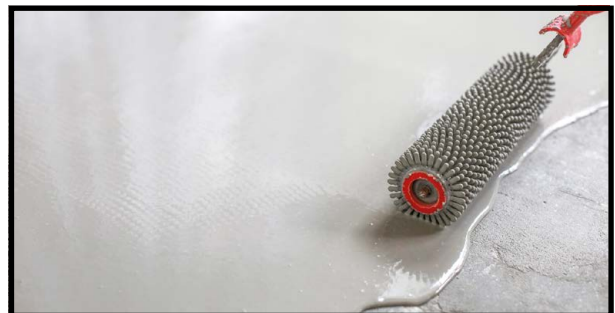
AREAS OF APPLICATION

Beverage production (including soft drink manufacturing).

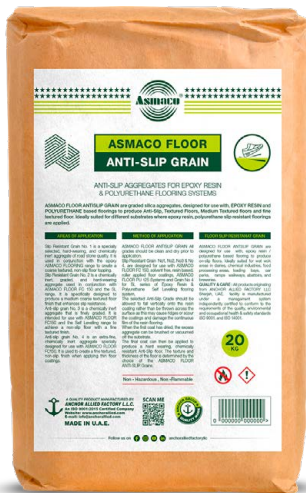
- Showrooms and demonstration areas.
- Industrial and commercial cold kitchens.
- Retail spaces.
- Schools, hospitals and hotels.

ASMACO FLOOR PRIME P2 - SF:	4 – 6 m ² / Kg
ASMACO FLOOR 4000 SL:	~1.8 Kg / m ² / 1.0 mm Thickness
ASMACO FLOOR 4000 SL:	~2.7 Kg / m ² / 1.5 mm Thickness
ASMACO FLOOR 4000 SL:	~3.6 Kg / m ² / 2.0 mm Thickness
ASMACO FLOOR 4000 SL:	~5.4 Kg / m ² / 3.0 mm Thickness
ASMACO FLOOR 4000 SL:	~7.2 Kg / m ² / 4.0 mm Thickness

PACKAGING	Set 46 kg kit (Part A 10.5 kg, Part B 4.5 kg), Color paste 0.4 kg, filler 30.6 kg
COLOUR	Available in 12 Shades (Refer TDS)
TYPE	Multi Component



ASMACO FLOOR ANTI-SLIP GRAIN



Anti-Slip Aggregates for Epoxy Resin and Polyurethane Flooring Systems

ASMACO FLOOR ANTISLIP GRAIN are graded silica aggregates, designed for use with, EPOXY RESIN and POLYURETHANE based floorings to produce Anti-Slip, Textured Floors, Medium Textured floors and fine textured floors. Ideally suited for different substrates where epoxy resin, polyurethane slip resistant floorings are applied.

AREAS OF APPLICATION

Anti-slip grain No. 1 is a chemically inert aggregate that is finely graded. It is intended for use with ASMACO FLOOR FC150 and the Self Levelling range to achieve a non-slip floor with a fine textured finish. Slip Resistant Grain No. 2 is a chemically inert, graded, and hard-wearing aggregate used in conjunction with ASMACO FLOOR FC 150 and the SL range. It is specifically designed to produce a finish medium coarse textured floor that enhances slip resistance. Slip Resistant Grain No. 3 is a specially selected, hard-wearing, and chemically inert aggregate of road stone quality. It is used in conjunction with the epoxy ASMACO FLOORING range to create a coarse textured, non-slip floor topping. ASMACO FLOOR FC 150 coating. When using anti-slip grain No. 4, the resultant floor finish will be of a very fine texture the thickness of which will range from 0.3 to 0.6 mm.

PACKAGING	ASMACO FLOOR ANTISLIP GRAIN: 20 Kg/ Bag
COVERAGE RATE	0.5 – 2 Kg/ m ²



ASMACO FLOOR UV 2



High Performance two Component UV resistant polyurethane coating

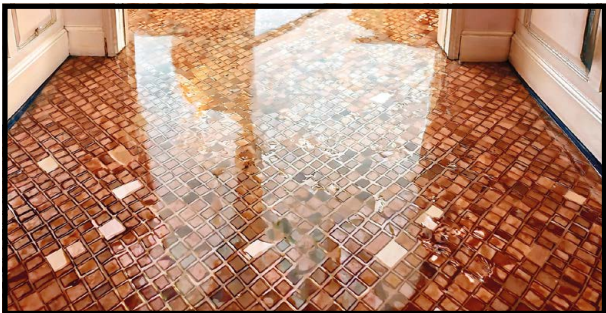
ASMACO FLOOR UV 2 is a high-performance, two-component polyurethane topcoat engineered to provide exceptional UV resistance and protection for concrete surfaces. This advanced formulation is designed for use as a sealer, specifically within the ASMACO FLOOR range of epoxy and polyurethane coating systems.

AREAS OF APPLICATION

ASMACO FLOOR UV2 is designed for a wide range of floors with various levels of mechanical and chemical exposure.

- Car Parks.
- Parking Bays.
- Pedestrian Walkways.
- Industrial Floors.
- Drive Ways.
- Ramps and Traffic Deck Systems.

PACKAGING	ASMACO FLOOR UV2: Pack Size: 20 Kg Set, PART A: 15 Kg, PART B: 5 Kg
COVERAGE RATE	4 - 6 m ² / Kg Depending on the surface conditions.
COLOUR	Clear / RAL Colour (Refer TDS)
TYPE	Two Component



ANCHOR CLEANER 1



ANCHOR CLEANER 1 for various type of industrial resins, chemicals of tools, containers, and substrates

ANCHOR CLEANER 1 is ideal for dissolving various types of industrial resin - epoxy, polyurethane, polysulphide etc. It can be used as a cleaner for tools, containers, and substrates.

AREAS OF APPLICATION

- ANCHOR CLEANER 1 For cleaning tools, it is best to pour some into a container and to clean the implements within this container.
- For cleaning substrates, the ANCHOR CLEANER 1 can be poured directly, or applied by cloth or paper.

PACKAGING	ANCHOR CLEANER 1 is available in 3 Liter Tin
COLOUR	Clear





Epoxy Based Tile Adhesive

ASMACO POXY TA



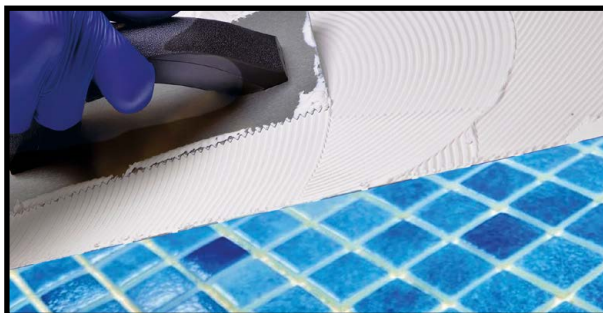
High-grade, epoxy adhesive with no vertical slip ceramic tiles & stone on horizontal and vertical surfaces.

ASMACO POXY TA is a high-performance, solvent-free, thixotropic, two-component tile adhesive formulated with a blend of epoxy resins and specially selected high-strength fillers. This adhesive is engineered to provide exceptional bonding strength and durability, making it ideal for demanding applications. Its robust formulation ensures reliable performance even in extreme hot and tropical climates, providing a long-lasting solution for both residential and commercial tile installations. ASMACO POXY TA is versatile, offering excellent adhesion for a wide range of ceramic tiles and stone materials, with the added benefit of non-sag properties for easy application on vertical surfaces.

AREAS OF APPLICATION

- Indoor and Outdoor Use:
- Walls and Floors.
- Chemical-Resistant and Water-Impermeable.
- Wall and Floor Covering.
- Swimming Pools and Wellness Areas.
- Laying of Ceramic Tiles in Various Building.
- Public and Industrial Buildings Fixing of Natural Stones.

PACKAGING	ASMACO POXY TA 6 Kg Set (A+B) Part A, 4.8 Kg Part B, 1.2 Kg
COVERAGE RATE	1.74 Kg /m ² /1mm thickness
COLOUR	Off White





ANCHOR ALLIED FACTORY L.L.C.

UNITED ARAB EMIRATES